

Section 1 - Demand Control Ventilation



- 200mm – 760mm diameter
- Suitable for operating up to 50°C
- Volume flow up to 8.4m<sup>3</sup>/s
- Static pressures up to 900 Pa
- High energy efficiency
- High volume flow and pressure development
- Motor protection IP55

## Sizes

250, 330, 400, 500, 630 and 760mm diameter.

## Fan Performance

The fan is of high static efficiency design to give low running costs. The impeller is designed to give excellent performance characteristics with high volume flow and static pressure development without stall.

## Impellers

Manufactured from aluminium to Fläkt Woods patented mixed flow design with integral inlet fairing spun to close tolerances to give optimum performance.

## Motors

All motors are totally enclosed airstream rated, class F insulation with motor protection to IP55. All motors are supplied with sealed for life bearings. These motors are suitable for inverter speed control down to 20% of full speed.

## Electrical Supply

220 - 240V / 50Hz / 1 $\phi$  using ICU1.5 remote mounted.

All 1 $\phi$  fans are speed controllable using the Fläkt Woods iFan Intelligent Control Unit (ICU1.5), connected via cable and plug, installed in customer weather proof area.

380 - 420V / 50Hz / 3 $\phi$  using ICM3 remote mounted.

All 3 $\phi$  fans are speed controllable using the Fläkt Woods iFan Intelligent Control Unit (ICM3), installed in customer weather proof area maximum 30°C ambient.

## Temperature Range

-20°C to 50°C

## Casings

Fabricated from corrosion resistant pre-galvanised sheet steel with proprietary flanged system to HVAC specification DW 144. Fan support arms are of mild steel, resiliently mounted to a plate.

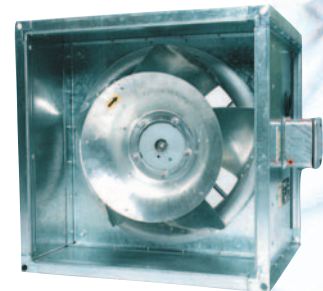
## Accessories

Silencers, Vibration isolators\*, Matching flanges, Flexible connectors.

\* Fan units have integral resilient mountings on motor arms, therefore vibration isolators are not normally required.

## Mounting

Mounting kit for ICU1.5 available, refer to section 1.8.



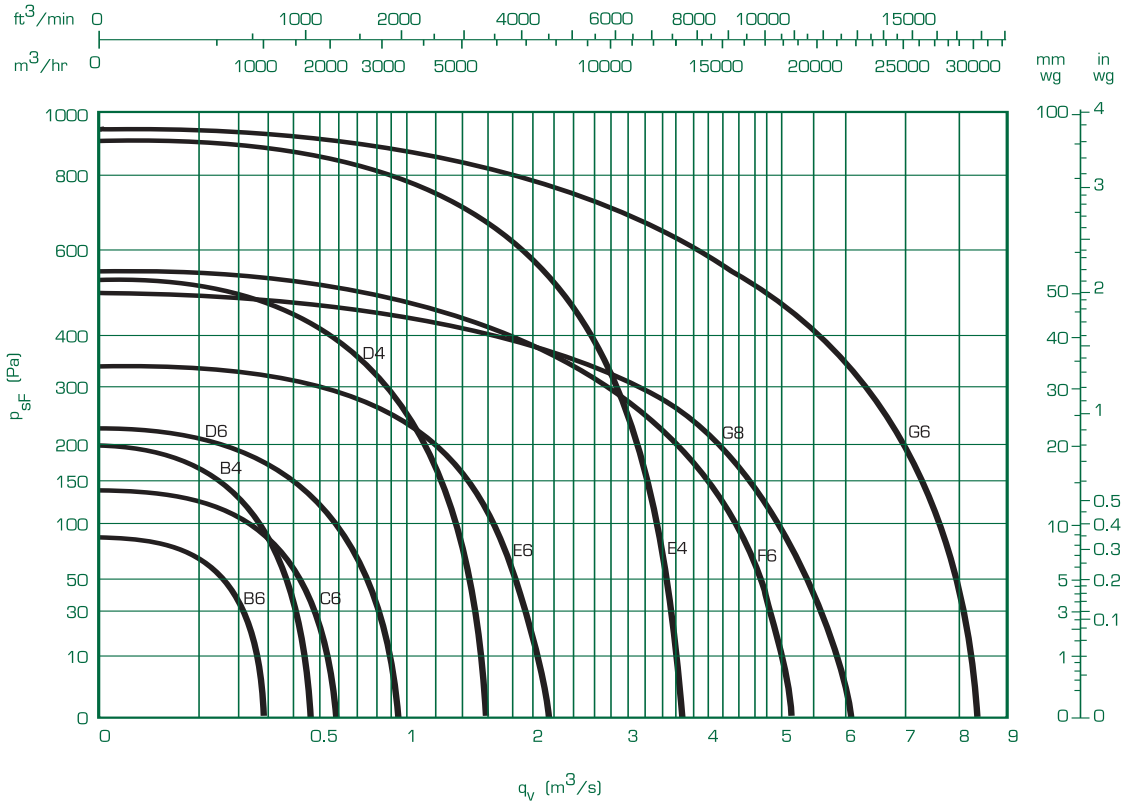
### Electrical Data

Product Code	Speed rev/min	Motor	220-240V/50Hz/1 $\phi$					
			Product Number	Motor Rating (kW)	Full Load Current (at 230V) (A)	Starting Current (at 230V) (A)	Controller	Sound Level dBA
B6/250	860	BT4	WZ183152	0.034	0.31	0.47	ICU1.5	39
B4/250	1300	BT4	WZ182152	0.095	0.8	1.3	ICU1.5	50
C6/330	880	BT5	WZ233152	0.083	0.9	1.2	ICU1.5	46
C4/330	1300	BT5	DZ232363	0.21	1.85	2.3	ICU1.5	57
D4/400	1380	CT5	DZ242152	0.52	3.9	7.8	ICU1.5	61
E6/500	870	CT9	WZ273152	0.54	3.8	6.8	ICU1.5	58

Product Code	Speed rev/min	Motor	380-420V/50Hz/3 $\phi$					
			Product Number	Motor Rating (kW)	Full Load Current (at 400V) (A)	Starting Current (at 400V) (A)	Controller	Sound Level dBA
D6/400	900	CT5	WZ243352	0.37	1.2	3.2	ICM3	51
D4/400	1380	CT5	WZ242352	0.66	1.9	6.4	ICM3	61
E6/500	870	CT9	WZ273352	0.68	2	5.7	ICM3	58
E4/500	1400	F22	DZ272353	2.7	5.77	30	ICM3	71
F6/630	920	F22	WZ303352	2.5	6.42	26	ICM3	60
G8/760	710	D132	WZ324352	3.6	8.1	41.5	ICM3	67
G6/760	960	D132	WZ323352	6.6	10.4	52	ICM3	76

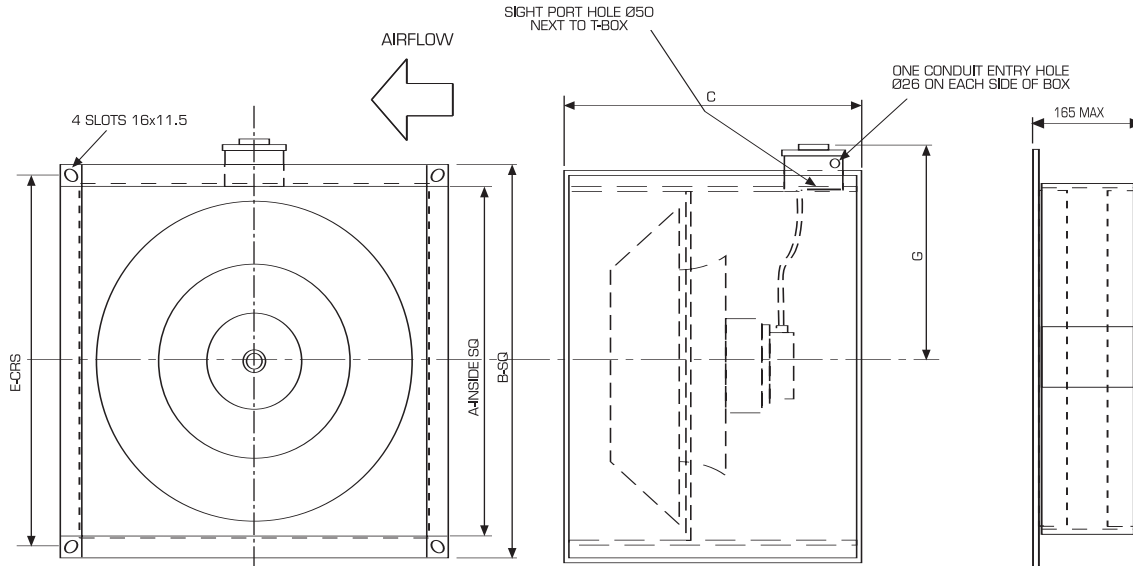
Sound pressure levels quoted are average dBA at 3m distance over a sphere, based on form B running under free field conditions and are presented for comparative purposes only.

## Performance Data



Product Code	Speed rev/min	m <sup>3</sup> /s at Pa (Static)												
		0	10	30	50	100	200	300	400	500	600	700	800	900
B6/250	860	0.30	0.27	0.21	0.15									
B4/250	1300	0.45	0.44	0.41	0.37	0.27	0.03							
C6/330	880	0.57	0.55	0.47	0.40	0.22								
D6/400	900	0.93	0.87	0.83	0.77	0.60	0.17							
D4/400	1380	1.55	1.50	1.47	1.45	1.35	1.15	0.88	0.54					
E6/500	870	2.13	2.10	2.03	1.96	1.74	1.24	0.54						
E4/500	1400	3.62	3.60	3.55	3.50	3.40	3.20	2.90	2.60	2.30	1.86	1.47	0.90	0.2
F6/630	920	5.2	5.1	4.95	4.85	4.45	3.55	2.65	1.75	0.85				
G8/760	710	6.10	5.90	5.80	5.70	5.25	4.23	3.20	2.00	0.30				
G6/760	960	8.30	8.20	8.10	8.00	7.70	7.00	6.25	5.50	4.8	3.85	2.90	1.90	0.85

## Dimensions



Type	A	B	C	E	G	Connector Assembly Weight (kg)	Fan Weight (kg)
250	410	468	340	443	297	4.91	26.0
330	460	518	380	493	322	5.44	31.5
400	518	576	510	551	351	6.03	38.0
500	710	768	610	743	447	8.03	74.5
630	915	973	660	948	550	10.18	109.0
760	1100	1158	800	1133	642	12.10	190.0

All dimensions shown in mm.

Refer to section 1.8 for ICU1.5 mounting kit.

For a full range of accessories, please refer to section 1.8 or 9.1 (which covers all accessories).