

Intelligent Control Unit (ICU) iFICU

- Output 24V to the sensors, inputs are 0-10V from sensors
- Indicates fan run, fault and service requirements
- Can be integrated with a Building Management System (BMS)
- Remote monitoring availability eg. BMS
- Varies fan performance in response to input signals
- Provides ventilation from maximum to trickle to stop
- Duty sharing and auto changeover facility
- Indicates total running time, to assist servicing



PIR Switch (Occupancy Sensor) Room mounted iFPIRSW - R. 706529

- Switches the fan on when occupancy sensed
- Suitable for wall mounting, with 10m of cable, a flexible gland terminated with a plug



Temperature Switch Room mounted iFTSW - R. 706528

- Enables user to manually adjust the temperature set point
- Suitable for wall mounting, with 10m of cable, a flexible gland terminated with a plug



Relative Humidity Switch Room mounted iFHSW - R. 706527

- Enables the user to manually adjust the humidity set point
- Suitable for wall mounting, with 10m of cable, a flexible gland terminated with a plug



Duct Pressure Sensor iFPS330SE - D. 419061 iFPS750SE - D. 706530

- Communicates pressure to the controller (ICU)
- Suitable for wall mounting with 10m of cable, a flexible gland terminated with a plug
- Length of connection tube provided



CO₂ Sensor iFCO2SE - D. 418996

- Measures CO₂ ranging from 0 to 200 ppm
- Suitable for duct mounting, with 10m of cable, a flexible gland terminated with a plug



IFICU1.5 Mounting kit

- Mounting Kit - ASO 30442 (SingleBox and MiniBox)
- Mounting Kit - * ASO 30443 (JM, AX3, PowerBox)
& Copford single fan)
- Mounting Kit - * ASO 30444 (Copford Twin fan)

- For fixing ICU1.5 adjacent to fans
- Suitable for internal wall, floor mounting or fixing to box fan



*supplied with 2m cable.

Temperature Sensor Room mounted iFTSE- R. 706526

- Communicates temperatures to the controller (ICU)
- Suitable for wall mounting with 10m of cable, a flexible gland terminated with a plug



Relative Humidity Sensor Room mounted iFHSE - R. 706525

- Measures humidity range 0-100% RH
- Suitable for wall mounting, with 10m of cable, a flexible gland terminated with a plug



Air Valve iFK

- Two sizes 100mm and 125mm
- Manually adjusted during installation

Or

iFK-M

- Two sizes 100mm and 125mm
- Motorised operation varying airflow from trickle to full ventilation
- Use with 24V Transformer iFTR24
- Use with PIR - iFPIRSW-R



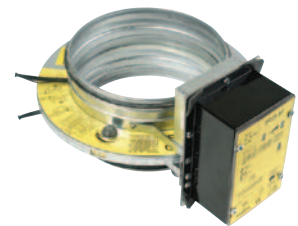
Air Valve iFK - MH

- Integral humidity switch
- Two sizes 100mm and 125mm
- Motorised operation varying airflow from trickle to full ventilation
- Use with 24V Transformer iFTR24
- Use with PIR - iFPIRSW-R



Motorised IRIS Damper iFIRIS - M

- 6 sizes 100mm to 315mm
- Use with 24V Transformer iFTR24
- Use with PIR iFPIRSW-R
- Override facility to fully open damper to enable duct cleaning



24V Transformer iFTR24. 419048

- For use with iFKM, iFK-MH, iFIRIS-M
- Transforms 220-240V/50Hz/1ph to 24V output to one or more valves/dampers



Fan Speed adjuster - iFFSA

- Enables user to manually adjust the fan speed.
- Suitable for wall mounting, with 10m of cable, a flexible gland terminated with a plug



Other

- 10m extension cable with plug iFCAB. 418967
- 20m extension cable with plug iFCAB. 418995
- Remote indicator box with audio alarm and mute iFAVI. 419076
- Connection box, 4 way with 10m cable and plug iFJB. 419699