

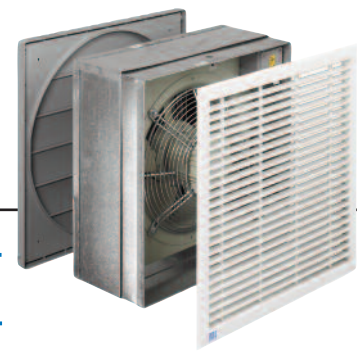
SPE



Industrial Wall Fans

features & benefits

Industrial Wall Fan SPE



The SPE wall mounted extract models are high performance units comprising an internal aluminium grille, adjustable wall sleeve, plate axial fan and air operated external all weather louvre, designed to provide powerful extract from demanding light commercial applications such as gymnasiums and squash courts.

- Axial impeller, wall sleeve, external louvre & internal grille.
- Three standard sizes, 350mm, 400mm and 450mm.
- Air volume flow rates of up to 1.55 m³/s.
- Highly efficient, lightweight induction motors with Class F Insulation.
- Motors fitted with thermal overload protection.
- Suitable for operating temperatures of 50°C with speed controllers & 70°C fixed speed.
- Sealed for life ball bearings to operate at any angle.
- Fully speed controllable.
- Extensive stock range available.
- IP55 rated terminal box.

Features & Benefits

Aesthetic – A stylish design comprising internal aluminium louvre grille in a white epoxy powder coated finish complements the external all weather louvre shutters.

Flexible performance - Adjustable pitch aerodynamic impellers allow easy site adjustment of the impeller from factory set maximum pitch angles if required.

Adaptable - Maximum ambient operating temperatures of up to 70°C fixed speed and 50°C when used with a speed controller.

Speed controllable – Each fan is suitable for speed control with an electronic controller, which means the air-flow can be altered to suit site conditions.

Adjustable – The telescopic wall sleeve in galvanised sheet steel is adjustable between 230mm and 390mm and fits through most wall thicknesses and has a cut out to allow concealed cable entry.

Safety – All motors are fitted with integral 'Thermal overload protection' preventing the motor from overheating.

Motors – These are protected to IP55 which means they are highly resistant to dust and water ingress.

Ease of installation – Fans are supplied with an integral IP55 terminal box and motor side guard, which allows the fan to be positioned conveniently to incoming electrical inputs.

Effective - A pressed inlet with motor side wire guard provides extra rigidity, a smoother airflow and enhanced performance characteristics.

Material strength - Units are manufactured from shock proof, heat resistant white plastic with a temperature stability of 107° C, robust, durable and non corrosive, with internal and external finger proof grilles.

Cost effective – Very efficient for moving high volumes of air at relatively low pressures.

Tested to the very latest standards – SPE units are tested to ISO 5801:1997 (airside performance) and to BS 848 Pt 2:1985 (sound performance) meaning accurate, up to date information on performance and noise data that can be relied upon.

Quality assurance – All units are designed and manufactured with procedures as defined in BS EN ISO 9001: 2000.

Mounting – Suitable for wall mounting.

Full ancillary range – Speed controllers

Reliability – Motors have sealed for life bearings.

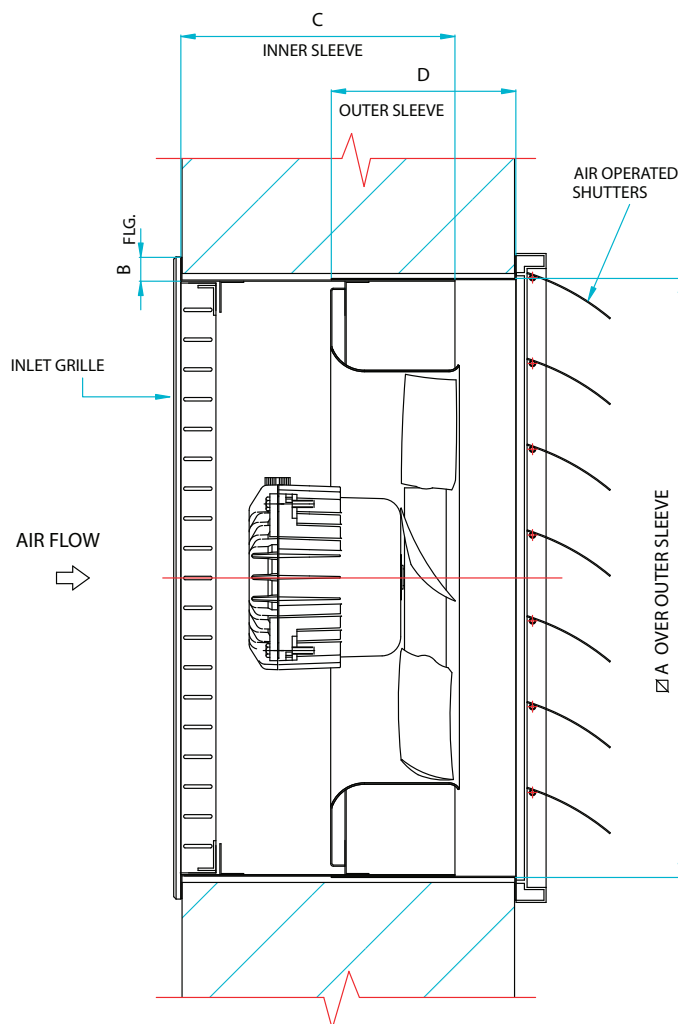
Warranty – Each SPE has a 1 year warranty.

Applications

Gymnasiums, sports halls, squash courts and other light commercial applications.

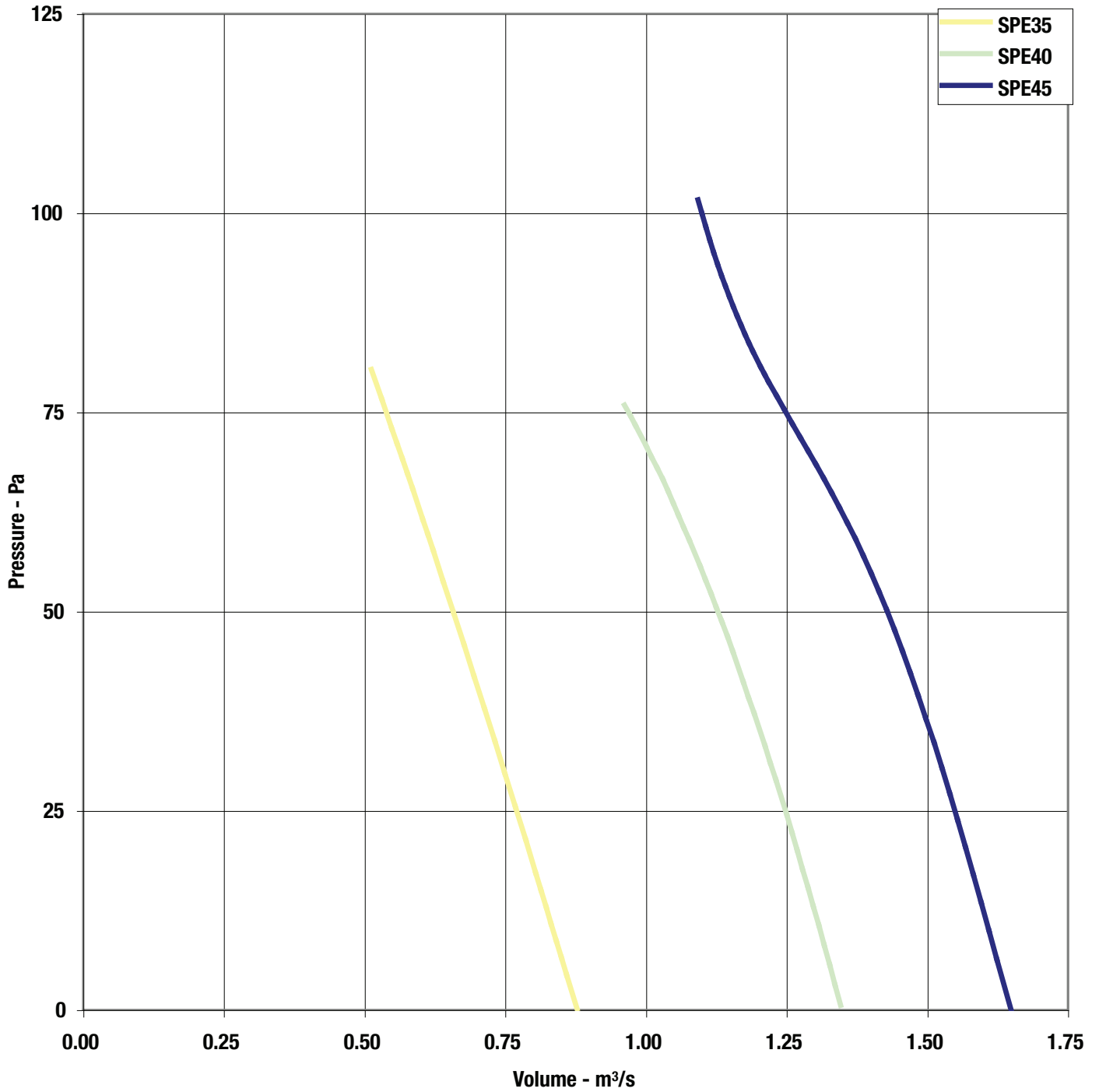
dimensional data

Industrial Wall Fan SPE



Product Code	A	B	C	D	Weight kg
SPE35	526	15	230	160	22
SPE40	586	15	230	160	29
SPE45	616	15	230	160	32

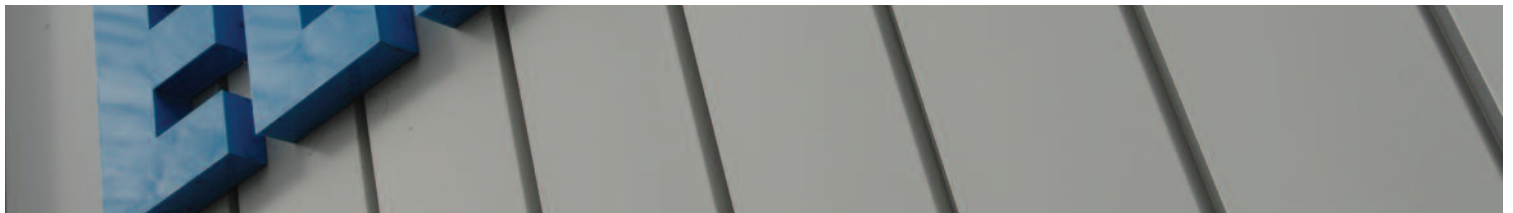
Industrial Wall Fan SPE



Industrial Wall Fan SPE

Product Code	Fan Dia	Max Speed r/min	Wall Sleeve	Power Watts	Max Airflow m ³ /s	dBa @ 3m
SPE35	350	1320	526 x 526	90	0.77	52
SPE40	400	1300	586 x 586	250	1.25	55
SPE45	450	1300	616 x 616	250	1.55	59

Sound levels are average spherical free field values for comparative purposes only.



Elta Fans Ltd - Applied Technology

17 Barnes Wallis Road,
Segensworth East Industrial Estate,
Fareham, Hampshire, P015 5ST, United Kingdom.

Visit: eltafans.com

e-mail: mailbox@eltafans.co.uk

Applied Technology:

Tel: +44 (0) 1489 566500

Fax: +44 (0) 1489 566555

Building Services:

Tel: +44 (0) 1384 275800

Fax: +44 (0) 1384 275810

Export:

Tel: +44 (0) 1489 566500

Fax: +44 (0) 1489 566555