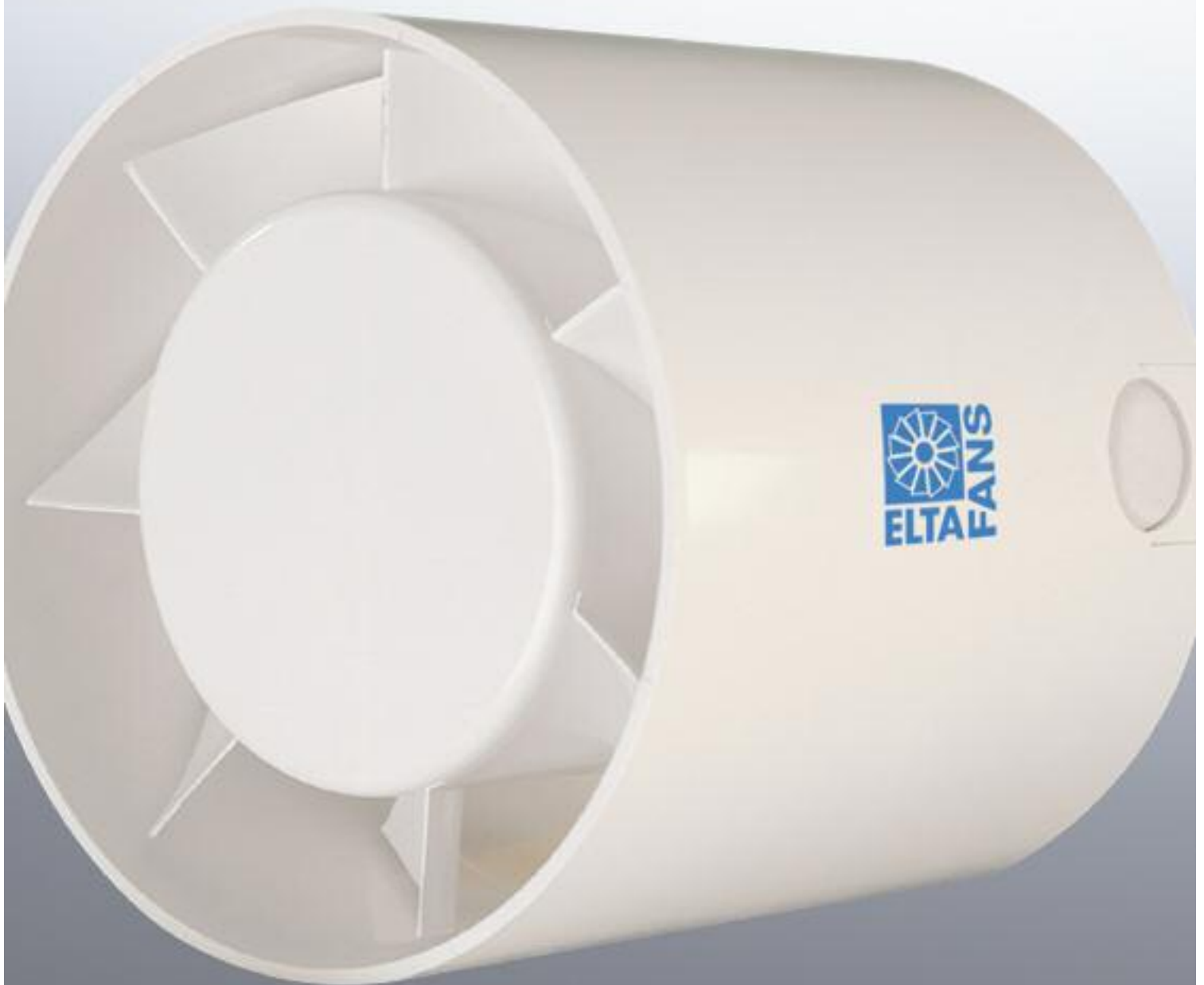
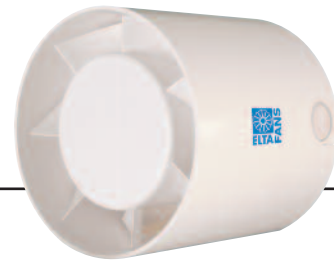


Domestic & Commercial
SM Range



Axial Flow **Fans**

features & benefits



SM range

The SM Axial Range is a stylish range of “In-duct” axial flow fans designed to be installed in-line with rigid or flexible ducting which provides the necessary pressure development to overcome resistance of many ducted domestic and commercial applications.

- 3 standard sizes from 100mm to 150mm.
- Air volume flow rates of up to 0.09 m³/s (324 m³/hr).
- Static pressures of up to 80 Pa.
- Axial impeller design for larger volumes.
- Shock proof, heat resistant plastic.
- Suitable for operating temperatures up to 40°C.
- Motors are double insulated with built-in thermal overload protection.
- CE Marked and BEAB approved.
- Sealed for life ball bearings to operate at any angle.
- Timer models adjustable from 3-15 minutes.
- Lower noise levels.

Features & Benefits

Motor Protection – Each SM motor is double insulated so no earth is required with integral thermal overload protection which prevents the motor from overheating.

Range - There are three sizes, 100mm, 125mm and 150mm.

Options - The SM range, dependant on model, incorporate a run on timer adjustable between 3 and 15 minutes

Ease of installation – Designed and supplied with all the necessary fixings, with unique features to make installation easier.

Material strength - Units are manufactured from shock proof, heat resistant white plastic, which is durable and non corrosive.

Mounting – Each unit is suitable for in-duct mounting installations.

Full ancillary range – Wall kits.

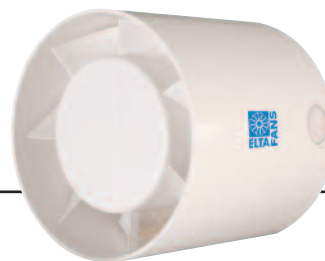
Reliability – Motors have sealed for life bearings.

Warranty – Each SM has a 2 year warranty.

Applications

Shower rooms, bathrooms, kitchens, utility rooms, residential and commercial facilities.

product information



SM range

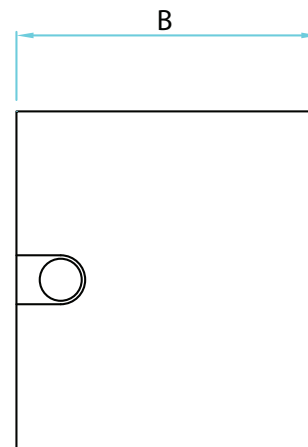
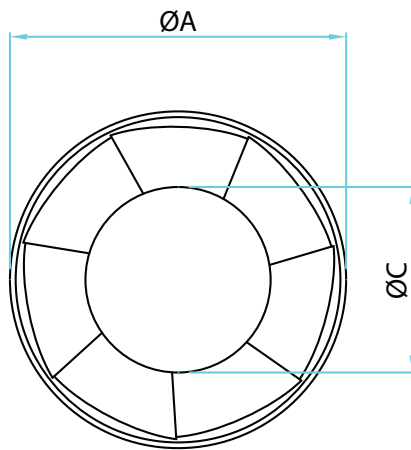
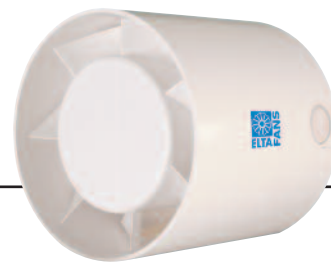
Product Code	Description
SM100	Basic unit, fan only
SM100T	Run on timer unit
SM125	Basic unit, fan only
SM125T	Run on timer unit
SM150	Basic unit, fan only
SM150T	Run on timer unit

Product Code	Voltage	Maximum Volume		Mounting Arrangement	Operation					
		l/sec	m ³ /hr		Ducting	Fan Only	Pull Cord	Run on Timer	Electric Shutter	Humidistat
SM100	230	27	97	√	√					
SM100T	230	27	97	√	√		√			
SM125	230	53	191	√	√					
SM125T	230	53	191	√	√		√			
SM150	230	90	324	√	√					
SM150T	230	90	324	√	√		√			

Note: The SA LV Range is not suitable for Ceiling, Wall, Window or Roof mounting

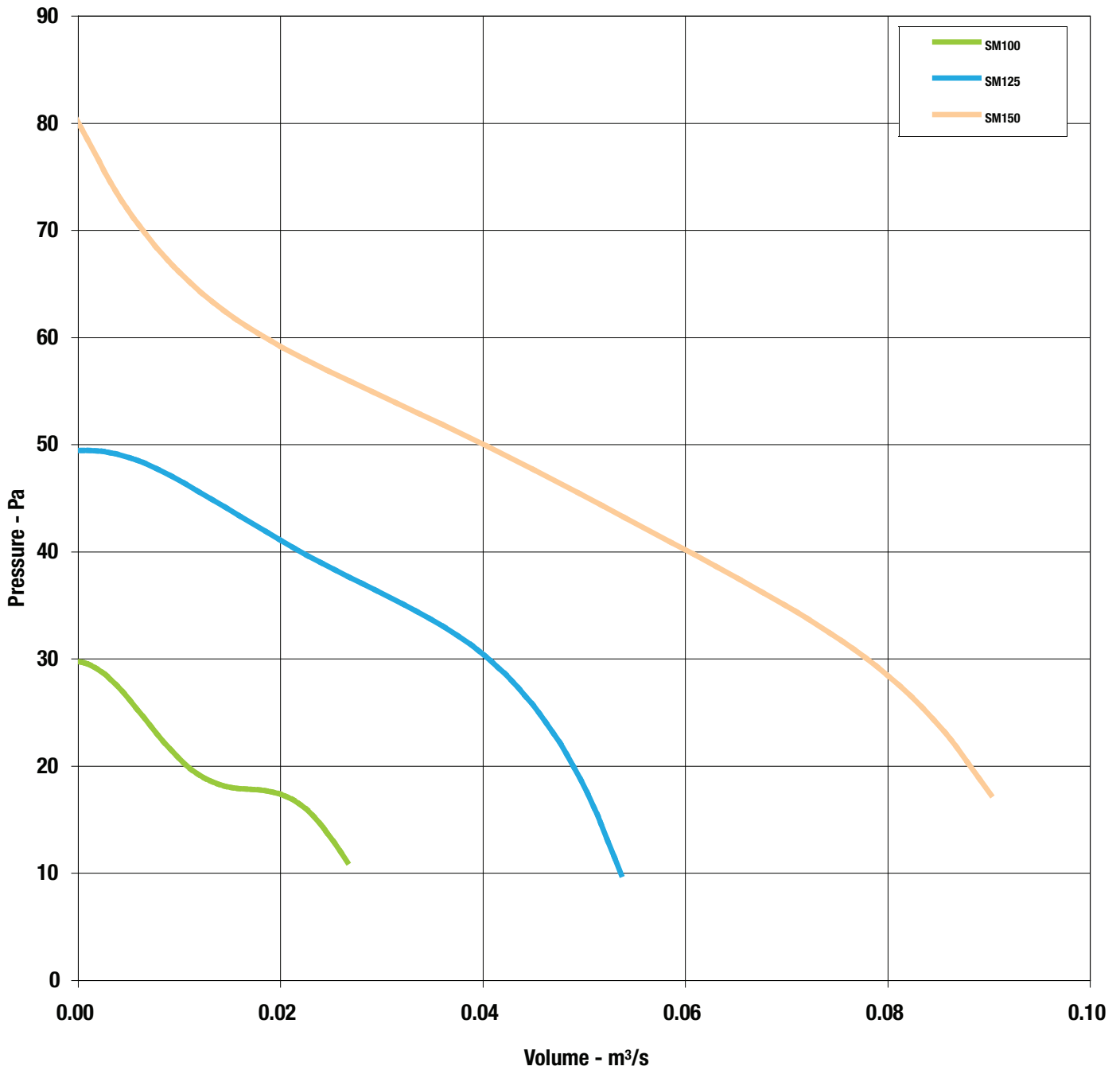
dimensional data

SM range



Product Code	A	B	C	Weight kg
SM100	97	92	60	1.0
SM125	118	106	65	1.2
SM150	148	108	74	1.5

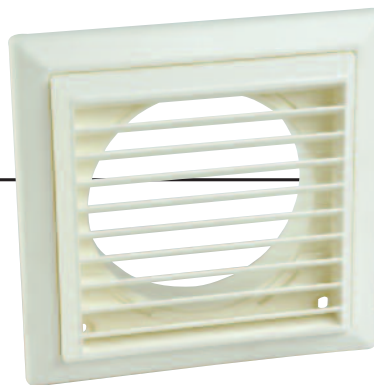
SM range



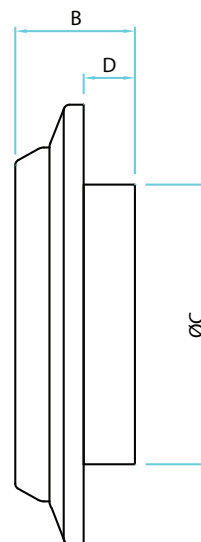
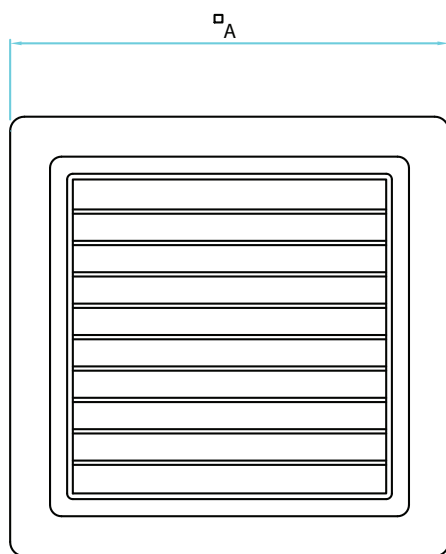
Model	SM100	SM125	SM150
Diameter.	100mm	125mm	150mm
Volts.	230	230	230
Watts.	15	20	25
r/min	2500	2450	2100
l/sec.	27	53	90
Max Pa.	30	50	80
dBA @ 3m	41	43	45

accessories

external wall grille



- Durable white plastic
- Mounted independantly of fan

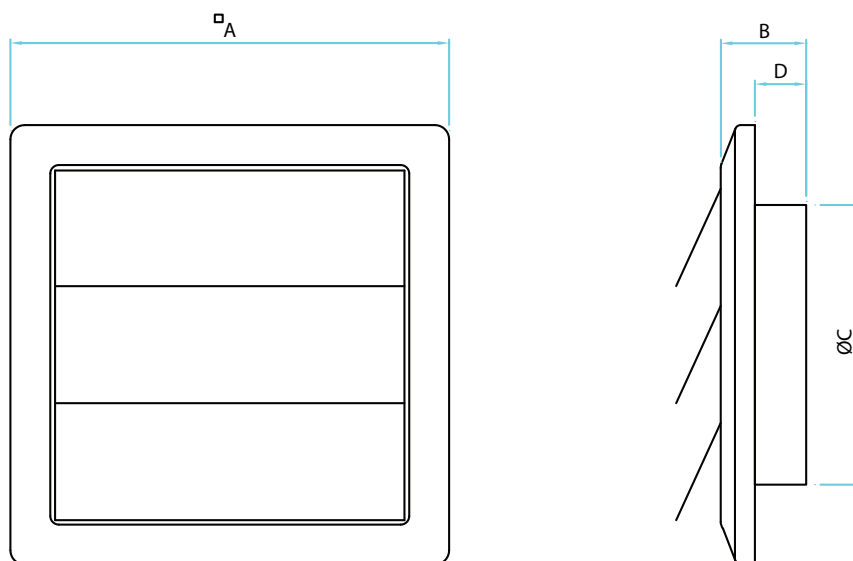


Product Code	A	B	C	D	Weight kg
SKGW-100D	154	42	98	18	0.114
SKGW-125D	200	58	123	28	0.210
SKGW-150D	200	58	148	28	0.210

shutter



- Durable white plastic
- Opens automatically with airflow
- Mounted independently of fan



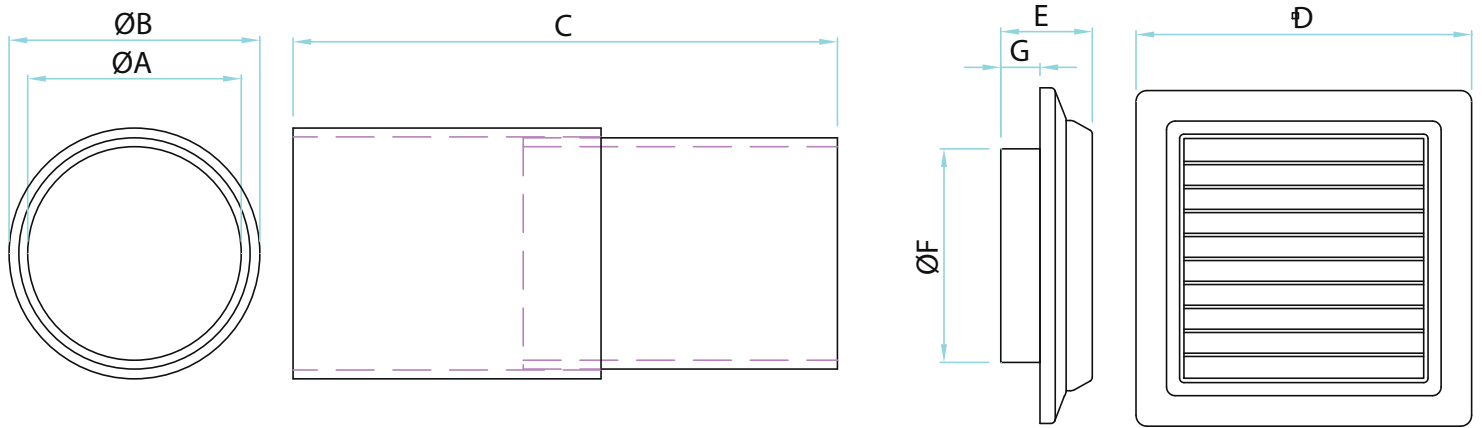
Product Code	A	B	C	D	Weight kg
SKFLW-100D	154	42	98	18	0.078
SKFLW-125D	200	58	123	28	0.178
SKFLW-150D	200	58	148	28	0.182

accessories

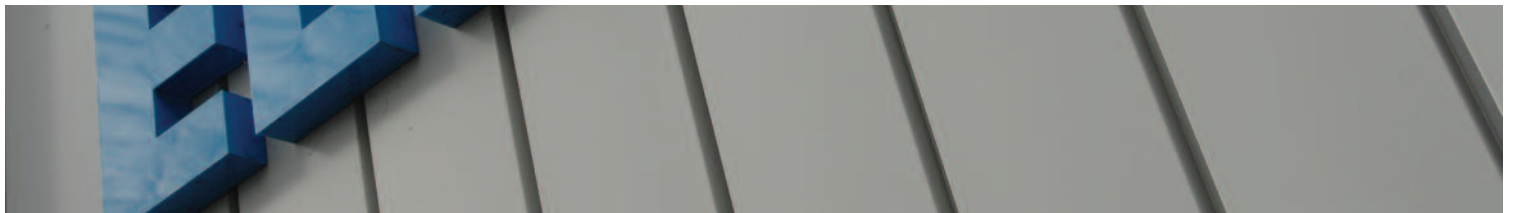
telescopic kit



- Durable white plastic grille for external mounting and rigid, white plastic telescopic sleeve.
- Minimum length of 215mm and maximum length of 380mm



Product Code		A	B	C	Weight kg		D	E	F	G	Weight kg
SK100SAWKTLSCOP	SLEEVE 100	100	105	203/355	0.305	GRILLE 100	154	42	98	18	0.114
SK125SAWKTLSCOP	SLEEVE 125	125	130	203/355	0.385	GRILLE 125	200	58	123	28	0.210
SK150SAWKTLSCOP	SLEEVE 150	150	155	203/355	0.474	GRILLE 150	200	58	148	28	0.210



Elta Fans Ltd - Applied Technology

17 Barnes Wallis Road,
Segensworth East Industrial Estate,
Fareham, Hampshire, P015 5ST, United Kingdom.

Visit: eltafans.com

e-mail: mailbox@eltafans.co.uk

Applied Technology:

Tel: +44 (0) 1489 566500

Fax: +44 (0) 1489 566555

Building Services:

Tel: +44 (0) 1384 275800

Fax: +44 (0) 1384 275810

Export:

Tel: +44 (0) 1489 566500

Fax: +44 (0) 1489 566555