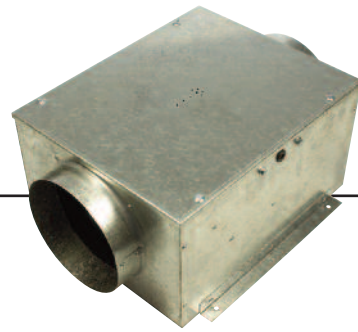


Hideaway^{SH}



In-line **Centrifugal Fans**

features & benefits



Hideaway SH

The Hideaway SH is a range of duct mounted in-line centrifugal fans designed specifically for installations where space is at a premium and noise levels are an important design criteria.

- 6 standard sizes from 100mm to 315mm.
- Air volume flow rates of up to 0.33 m³/s.
- Static pressures of up to 500 Pa.
- Motors are external rotor, protected to IP44 with Class B Insulation.
- Single inlet backward curved impellers.
- Low noise levels.
- Suitable for ambient operating temperatures of up to 50° C.
- Easy to install.
- Overcomes space restraints.
- Fully speed controllable.
- Robust galvanised sheet steel housing, acoustically lined.
- Extensive range of stock is available.
- Suitable for ducted extract or supply systems.
- Low profile.

Features & Benefits

Design appeal – Ideal for very shallow ceiling voids and / or where space is at a premium.

Low noise – Each unit is acoustically lined, therefore the breakout noise levels are low.

Material strength – A robust, yet lightweight unit with a galvanised sheet steel casing which is lined with flame retardant acoustic lining on the inlet for improved sound capabilities.

Ease of installation – All models are designed for direct connection to standard diameter flexible or rigid circular ducting with 50 mm long spigots for ease of connection.

Motor protection – All SH units have integral thermal overload protection which prevents the motor from overheating.

Performance – The single inlet, single width backward curved centrifugal impellers are directly driven by an external rotor motor, designed to be non overloading and provide high performance characteristics.

Easy maintenance – Access to the fan and motor is by an easily removable panel for maintenance when required.

Mounting – Each unit is supplied with integral mounting brackets.

Full ancillary range – Speed controllers, fast clamps, silencers, panel filters, electric heater batteries and flexible connectors and non-return dampers.

Tested to the very latest standards – SMF units are tested to ISO 5801:1997 (airside performance) and to BS 848 Pt 2:1985 (sound performance) at Elta Fans own test facility, meaning accurate, up to date information on performance and noise data that can be relied upon.

Quality assurance – All units are designed and manufactured with procedures as defined in BS EN ISO 9001: 2000.

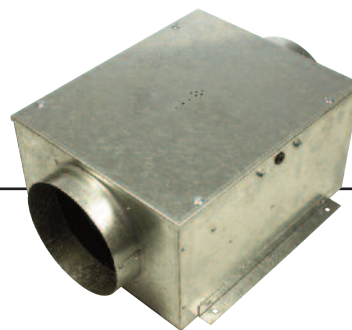
Reliability – Motors have sealed for life bearings.

Warranty – Each SH has a one year warranty.

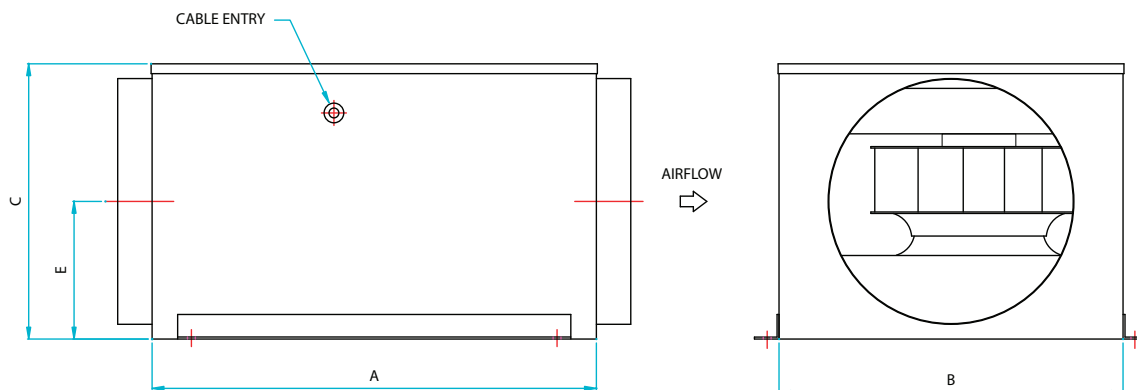
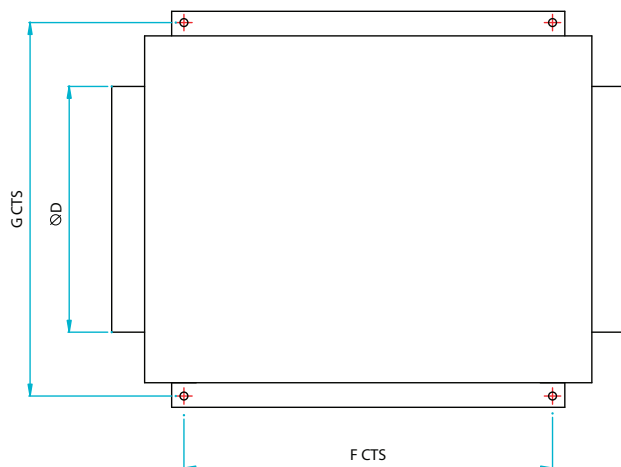
Applications

Bathroom and kitchen extract in apartments, hotels, residential properties, libraries and offices.

dimensional data

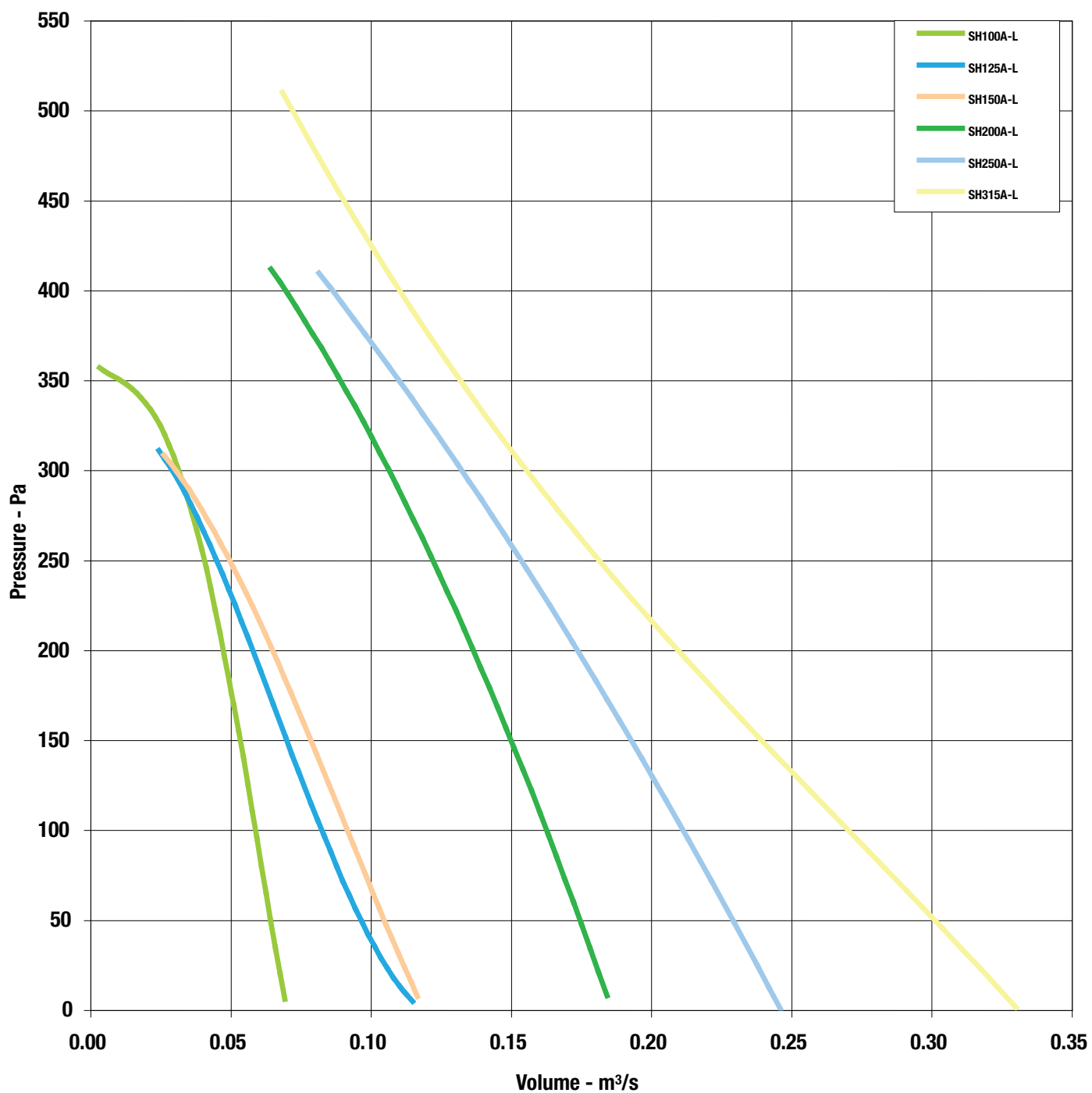


Hideaway SH



Product Code	A	B	C	D	E	F	G	Weight kg
SH100A-L	400	300	166	100	83	320	270	10
SH125A-L	400	300	166	125	83	320	270	10
SH150A-L	400	300	182	150	91	320	270	11
SH200A-L	427	350	230	200	115	347	320	14
SH250A-L	452	350	280	250	140	372	320	16
SH315A-L	430	400	340	315	170	350	370	20

Hideaway SH



performance & electrical data

Hideaway SH

SINGLE Phase - 220V-240V / 50Hz

Product Code	Max Speed r/min	Airflow m ³ /s @ Static Pressure Pa										Motor Electrical Data			Speed Control Electronic	In-Duct Sound Level dBA @ 3m	Breakout Sound Level
		0	50	100	150	200	250	300	400	500	600	FLC Amps	SC Amps	Output kW			
SH100A-L	2450	0.070	0.064	0.056	0.051	0.048	0.041	0.030	0.008			0.34	0.51	0.075	EL21	39	36
SH125A-L	2350	0.115	0.096	0.082	0.068	0.056	0.045	0.028				0.34	0.51	0.077	EL21	41	35
SH150A-L	2380	0.117	0.103	0.092	0.078	0.063	0.048	0.030				0.35	0.51	0.078	EL21	41	37
SH200A-L	2750	0.185	0.175	0.162	0.150	0.137	0.121	0.105	0.088	0.070		0.58	1.40	0.130	EL21	47	38
SH250A-L	2500	0.246	0.230	0.210	0.191	0.173	0.152	0.130	0.110	0.085		0.70	1.30	0.160	EL21	53	47
SH315A-L	2150	0.330	0.300	0.270	0.238	0.208	0.180	0.155	0.130	0.110	0.070	0.87	1.30	0.200	EL21	53	44

Sound levels are average spherical free field values fat 50% peak pressure or comparative purposes only.

Model	dBA Attenuation			
	300L	600L	900L	1200L
SH100A-L	-14	-20	-26	-28
SH125A-L	-11	-17	-22	-25
SH150A-L	-11	-17	-21	-23
SH200A-L	-10	-15	-19	-22
SH250A-L	-11	-15	-18	-21
SH315A-L	-12	-14	-17	-19

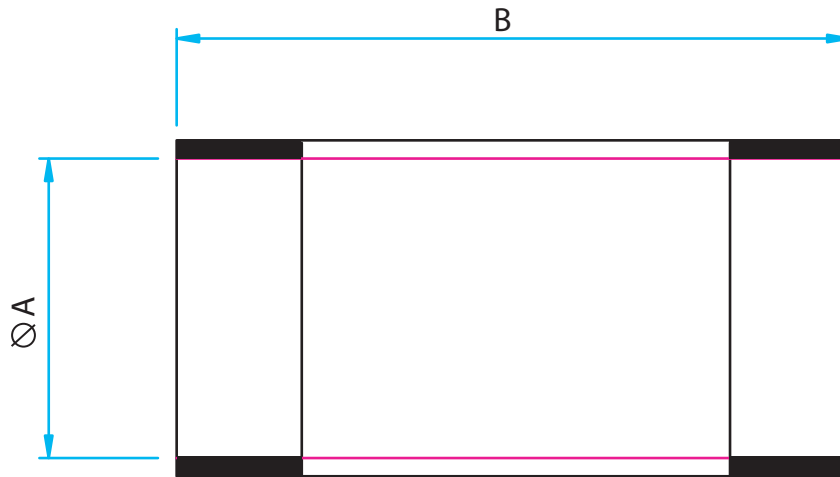
Hideaway SH

Product Code	63Hz	125Hz	250Hz	500Hz	1kHz	2kHz	4kHz	8kHz	dBA @ 3m
SH100A-L	59	61	61	62	47	44	37	30	39
SH125A-L	60	60	66	63	49	46	41	33	41
SH150A-L	60	61	64	62	52	49	45	37	41
SH200A-L	67	70	72	68	58	53	50	48	47
SH250A-L	69	74	78	74	64	60	58	56	53
SH315A-L	67	73	76	73	64	63	61	58	53

flexible connector



- Fix directly onto spigot
- Provides flexible connection between fan and accessory or duct
- PVC coated polyester with galvanised sheet steel

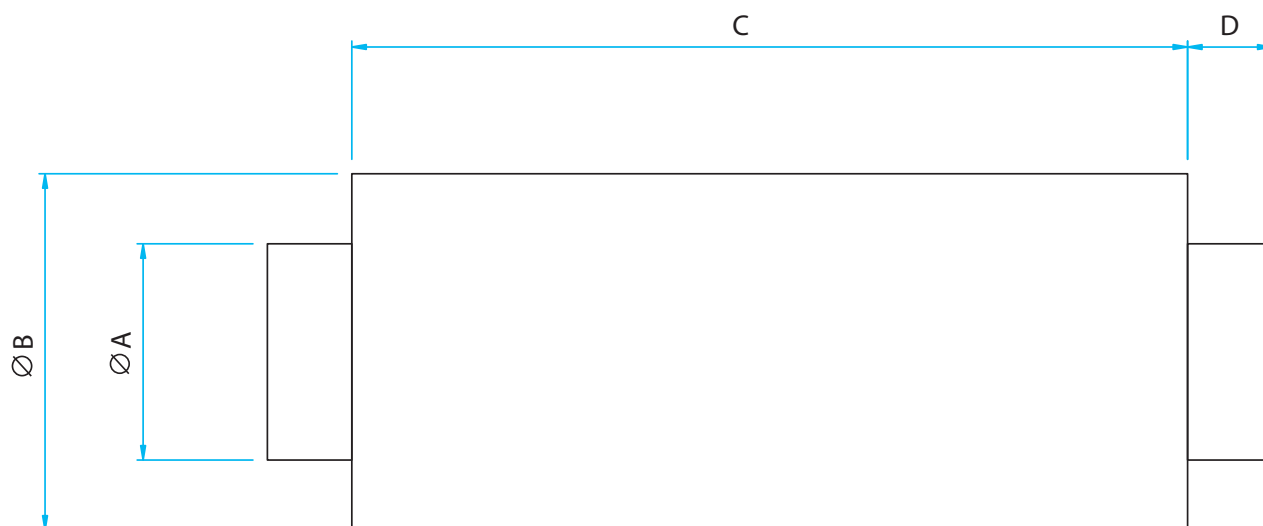


Product Code	Fan Dia A	B	Weight kg
018-0100-FLEX	100	150	0.2
018-0125-FLEX	125	150	0.2
018-0150-FLEX	150	150	0.2
018-0200-FLEX	200	150	0.3
018-0250-FLEX	250	150	0.4
018-0315-FLEX	315	150	0.5

silencers



- Pre-galvanised sheet steel with perforated steel lining
- Infill of glass tissue faced high density mineral wool
- For saturated or other special applications please refer to Elta



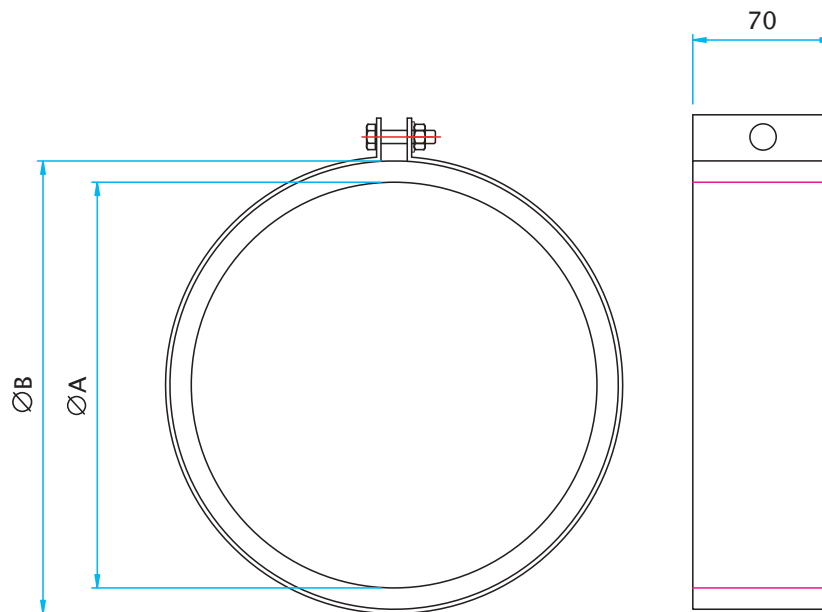
Product Code	Fan Dia	A	B	C1	C2	C3	C4	D	Weight kg			
									1	2	3	4
068-0100-JF*	100	98	204	300	600	900	1200	40	2.5	4.6	6.7	8.7
068-0125-JF*	125	123	230						2.9	5.4	7.8	10.2
068-0150-JF*	150	148	255						3.4	6.1	8.9	11.6
068-0200-JF*	200	198	305						4.2	7.6	11.0	14.5
068-0250-JF*	250	248	355						5.0	9.1	13.2	17.3
068-0315-JF*	315	313	420						6.1	11.1	16.1	21.0

* Add 1, 2, 3 or 4 depending on length required.

fast clamps



- For quick connection of spigotted fans to circular duct or accessories
- Galvanised steel circular duct clamp with foam lining

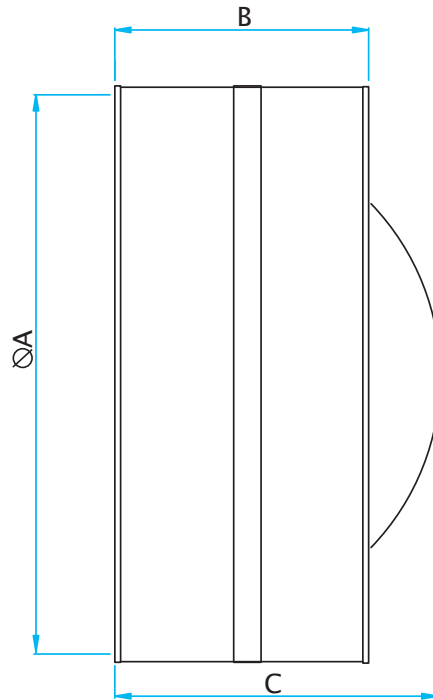


Product Code	Fan Size	A	B	Weight kg
018-100-CLAMP	100	92	116	0.25
018-125-CLAMP	125	117	141	0.29
018-150-CLAMP	150	142	166	0.33
018-200-CLAMP	200	192	216	0.42
018-250-CLAMP	250	242	266	0.49
018-315-CLAMP	315	307	331	0.59



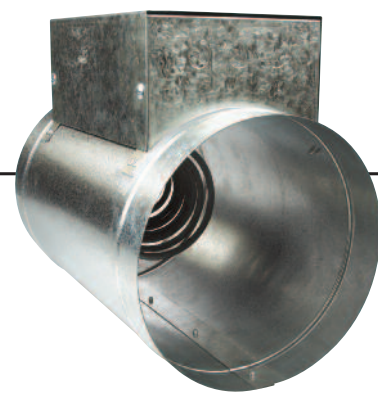
non-return dampers

- Prevents reverse flow of air when fan not operating
- Galvanised sheet steel case
- Spring operated, aluminium sheet blades

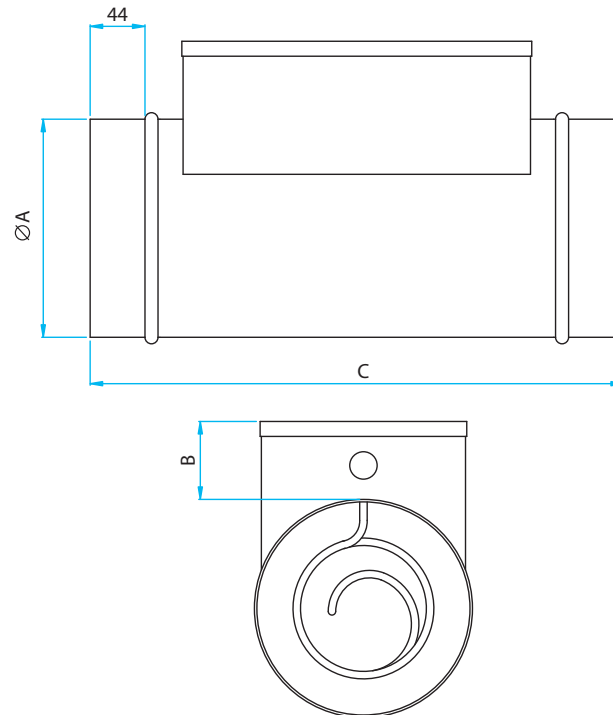


Product Code	Fan Dia A	B	C	Weight kg
018-100-DAMPER	100	90	100	0.2
018-125-DAMPER	125	90	100	0.3
018-150-DAMPER	150	90	110	0.3
018-200-DAMPER	200	125	150	0.6
018-250-DAMPER	250	125	190	0.6
018-315-DAMPER	315	125	210	1.3

electric heater battery

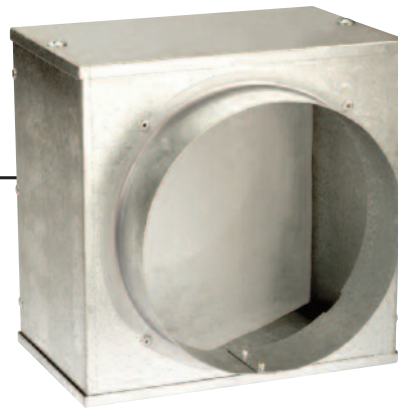


- Safe and clean heating
- Max exit temperature is 40°C at 70% RHdB
- Galvanised sheet steel case
- Elements are nickel chromium wire insulated by compacted magnesium oxide powder within a stainless steel or incoloy tube and sealed by ceramic bead and silicon sealant
- Air velocity min 2m/s, max 6m/s

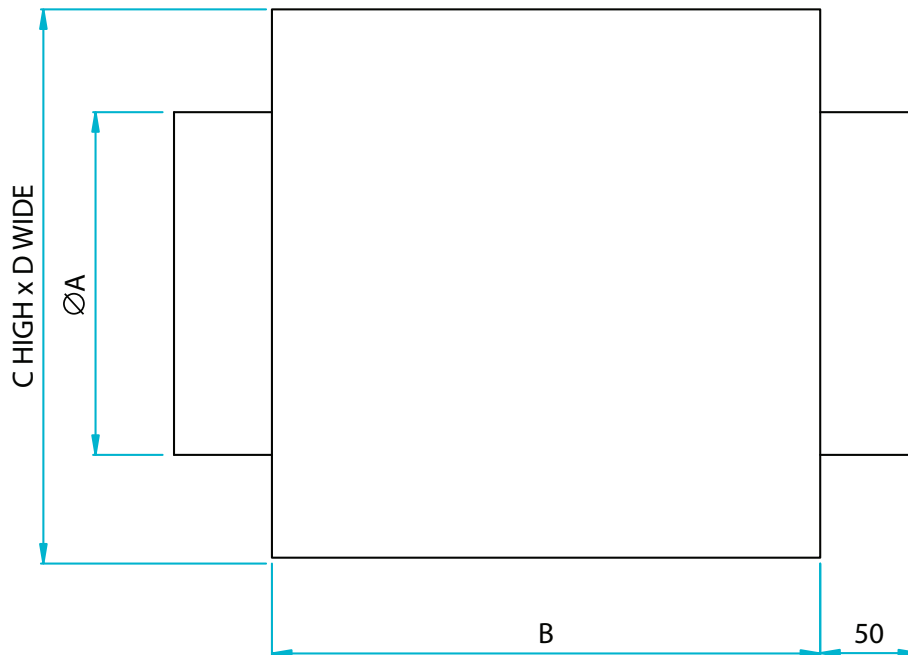


Product Code	kW	Stage	Phase	Airflow @ m³/s		A	B	C	Weight kg
				Min	Max				
018-0100-HEAT-1	0.75	1	1	0.016	0.047	100	55	400	2
018-0125-HEAT-1	1.0	1	1	0.025	0.074	125	80	400	2
018-0150-HEAT-1	1.5	1	1	0.035	0.106	150	80	400	3
018-0200-HEAT-1	2.0	1	1	0.063	0.189	200	80	400	4
018-0250-HEAT-1	3.0	1	1	0.098	0.295	250	80	400	4
018-0315-HEA-1/3	4.5	3/1	1/3	0.156	0.468	315	80	400	5

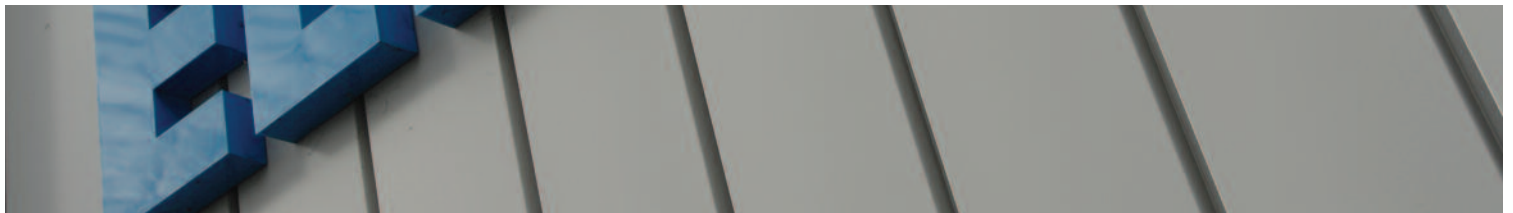
panel filters



- Galvanised steel casing
- Filter media to BS EN 779 rating G3 with 85% arrestance
- Filter access with removable panel



Product Code	Fan Dia A	B	C	D	Weight kg
018-0100-FILT-P	100	155	200	200	2
018-0125-FILT-P	125	155	200	200	2
018-0150-FILT-P	150	155	250	250	2
018-0200-FILT-P	200	155	250	250	2
018-0250-FILT-P	250	200	300	300	3
018-0315-FILT-P	315	300	440	440	8



Elta Fans Ltd - Applied Technology

17 Barnes Wallis Road,
Segensworth East Industrial Estate,
Fareham, Hampshire, P015 5ST, United Kingdom.

Visit: eltafans.com

e-mail: mailbox@eltafans.co.uk

Applied Technology:

Tel: +44 (0) 1489 566500

Fax: +44 (0) 1489 566555

Building Services:

Tel: +44 (0) 1384 275800

Fax: +44 (0) 1384 275810

Export:

Tel: +44 (0) 1489 566500

Fax: +44 (0) 1489 566555