

SAY



Window & Wall **Fans**

features & benefits

Window / Wall Fan SAX



The SAX is a stylish, high performance range of axial flow fans which provides powerful extract of air through windows, walls, ceilings and panels for a variety of domestic and commercial applications.

- Axial impeller design for larger volumes.
- Two standard sizes, 9" and 12"
- Automatic and reversible models.
- Air volume flow rates of up to 0.528 m³/s (1900 m³/hr).
- Static pressures of up to 80 Pa.
- IPX4 – Splash proof.
- Shock proof, heat resistant plastic.
- Suitable for operating temperatures of up to 40° C.
- Motors are double insulated with built in thermal overload protection.
- Sealed for life ball bearings to operate at any angle.
- Energy efficient with low power absorption.

Features & Benefits

Versatility – The SAX is designed for installation into windows, panels, ceilings, as well as most solid or cavity walls.

Range - There are two standard sizes, 9" and 12" as well as automatic reversible models which allow shutters to be left open where natural ventilation is required without any security risk.

Options - SAX automatic models incorporate silent, delayed action, slow moving electric shutters for silent opening and closing, and depending on model, a 5 speed controller, which may be fully reversible.

Safety – SAX fans are IPX4 Splash proof, protected against water splashed from all directions which means they can be safely installed in Zones I and II in accordance with IEE Wiring Regulations.

Motor protection – Each SAX motor is double insulated so no earth is required, and fitted with integral thermal overload protection which prevents the motor from overheating.

Ease of installation – Designed and supplied with all the necessary fixings, which means 'easy fix mounting' by one installer alone for the complete installation of the fan.

Material strength - Units are manufactured from shock proof, heat resistant white plastic with a temperature stability of 107° C, robust, durable and non corrosive, with internal and external finger proof grilles.

Cost effective – The high performance rates of the SAX unit mean they are cost effective as installations no longer require two or more fans.

Inclusive – All 'built-in' units are supplied with telescopic wall liner, internal wall grille, external shutter and five speed reversible controller which minimises costs.

Flexibility – Available in 2 sizes with a 5 speed reversible controller to give the installer a range of adjustment if duties are under or over achieving.

Mounting – Each unit is suitable for window, wall, panel or ceiling mounting installations.

Full ancillary range – Wall kits, window kits, fan locking rings.

Reliability – Motors have sealed for life bearings.

Warranty – Each SAX has a 2 year warranty.

Applications

Pubs, restaurants, offices, kitchens, factories, schools and shops.

product information



Window / Wall Fan SAX

Product Code	Description
SAX23/9A	Basic unit, fan only
SAX23/9AR	Run on timer unit
SAX23/9ARB	Pull cord operated unit
SAX30/12A	Basic unit, fan only
SAX30/12AR	Run on timer unit
SAX30/12ARB	Pull cord operated unit

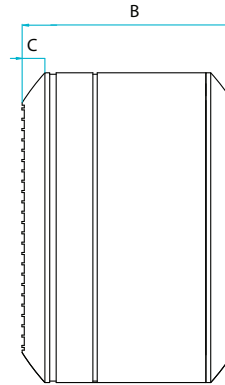
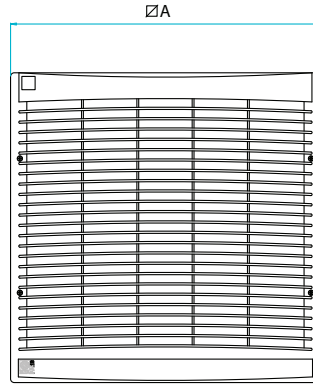
Product Code	Voltage	Maximum Volume		Mounting Arrangement			Operation			
		l/sec	m ³ /hr	Ceiling	Wall	Window	Fan Only	Electrically Reversible	Speed Control Option	Speed Control Standard
SAX23/9A	230	229	824	√	√	√	√			
SAX23/9AR	230	229	824	√	√	√	√	√		√
SAX23/9ARB	230	229	824	√	√	√	√	√		√
SAX30/12A	230	528	1900	√	√	√	√			
SAX30/12AR	230	528	1900	√	√	√	√	√		√
SAX30/12ARB	230	528	1900	√	√	√	√	√		√

dimensional data

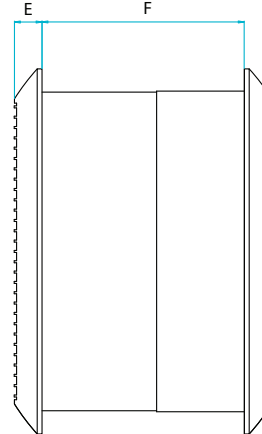
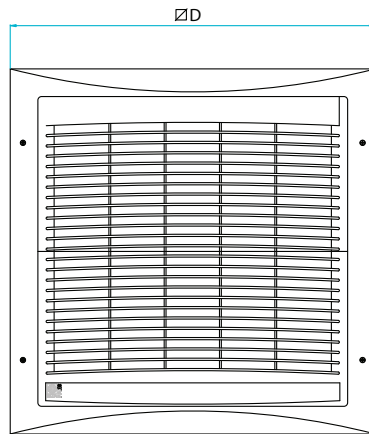


Window / Wall Fan SAX

Window Mount

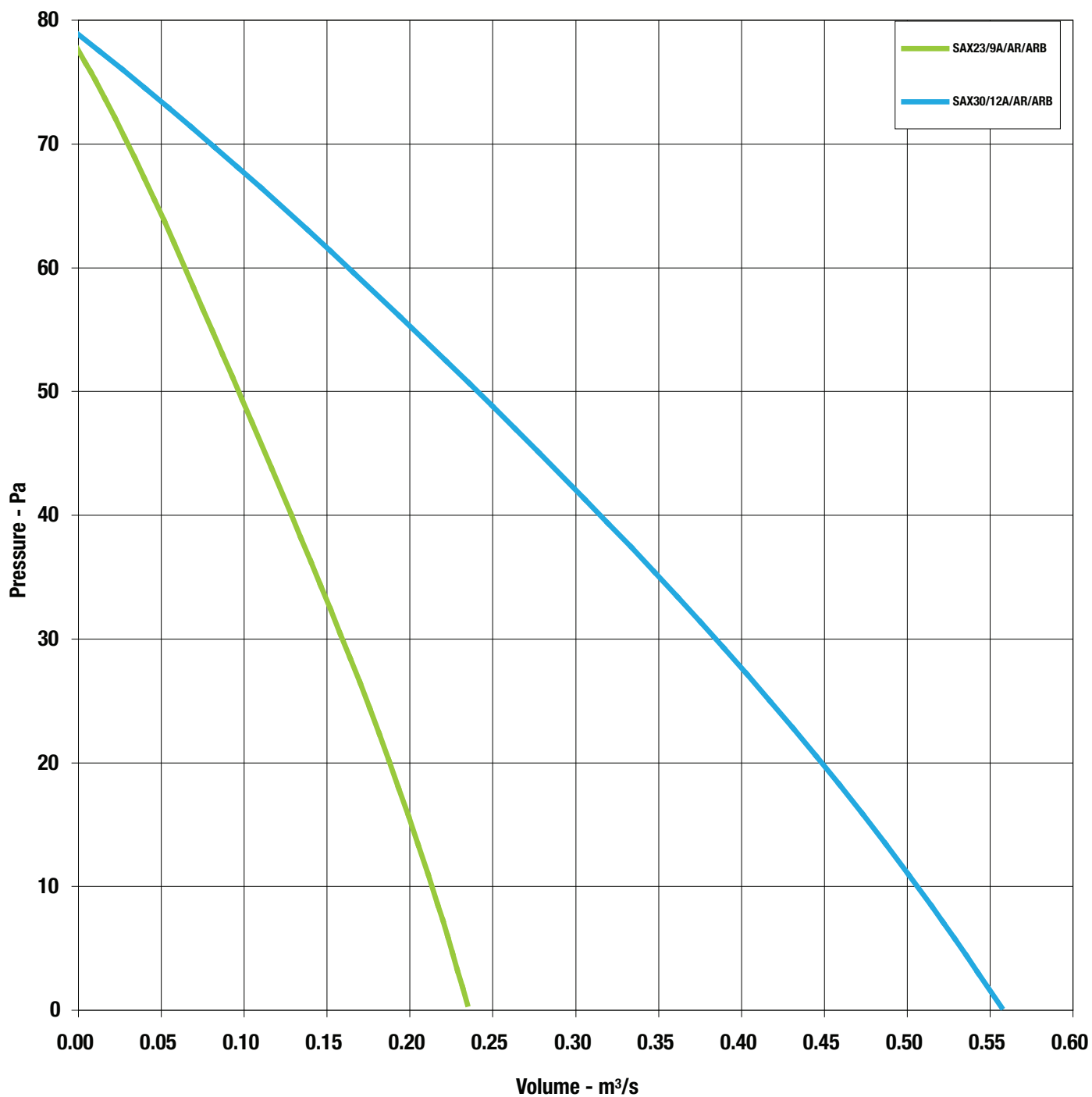


Wall Mount



Product Code	A	B	C	D	E	F	Weight kg
SAX23/9A	340	200	40	-	-	-	5
SAX23/9AR	340	200	40	-	-	-	6
SAX23/9ARB	-	-	-	415	40	240-315	11
SAX30/12A	420	230	40	-	-	-	8
SAX30/12AR	420	230	40	-	-	-	9
SAX30/12ARB	-	-	-	495	40	240-315	15

Window / Wall Fan SAX



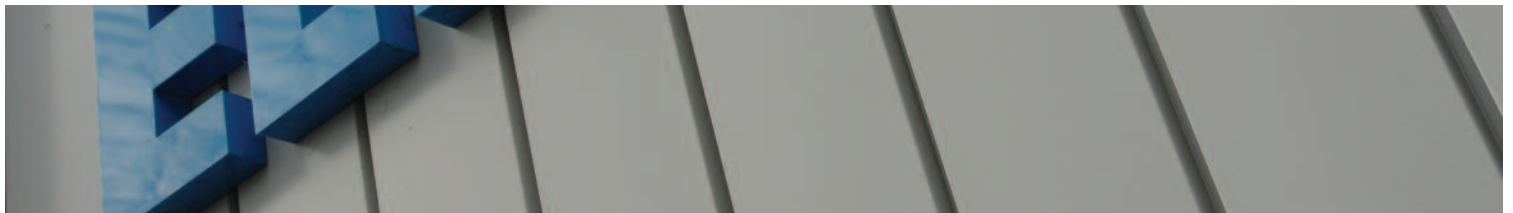
Window / Wall Fan SAX

Product Code	Fan Size	Max Airflow m ³ /s	Max Pa	Max Speed r/min	FLC Amps	Power Watts	dBA @ 3m
SAX23/9A†	9	0.229	75	1350	0.20	45	49
SAX23/9AR*	9	0.229	75	1350	0.20	45	49
SAX23/9ARB*	9	0.229	75	1350	0.20	45	49
SAX30/12A†	12	0.528	80	1200	0.39	90	51
SAX30/12AR*	12	0.528	80	1200	0.39	90	51
SAX30/12ARB*	12	0.528	80	1200	0.39	90	51

† Units that are suffixed with an A include a silent operated shutter. These are either intake only, extract only or both (in conjunction with a double pole switch).

* Units that are suffixed with an AR and ARB include silent operated shutters. These units are five speed extract and supply, operated through a control provided with the unit. Units suffixed with ARB include a telescopic steel wall liner.

Sound levels are average spherical free field values for comparative purposes only.



Elta Fans Ltd - Applied Technology

17 Barnes Wallis Road,
Segensworth East Industrial Estate,
Fareham, Hampshire, P015 5ST, United Kingdom.

Visit: eltafans.com

e-mail: mailbox@eltafans.co.uk

Applied Technology:

Tel: +44 (0) 1489 566500

Fax: +44 (0) 1489 566555

Building Services:

Tel: +44 (0) 1384 275800

Fax: +44 (0) 1384 275810

Export:

Tel: +44 (0) 1489 566500

Fax: +44 (0) 1489 566555